

Using TViX Network



There are two network mode. One is SAMBA mode another is NFS mode.

- **SAMBA mode** : You can play the file via network without special program, but the speed is lower than NFS mode. (Currently, do not Support in Vista)

- **NFS mode** : You must install the TViX NetShare utility in to your PC, but you can play the TP or DVD jukebox without stutter.

We recommend to share the NTFS file system. FAT32 file system does not contain enough information to create a lasting file name, so TViX doesn't load the file after changing the file name.

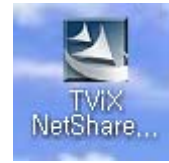
* Please connect your TViX product to PC with USB cable once.

* All specifications and information are subject to changes without further notices

1. TViX NetShare Installation

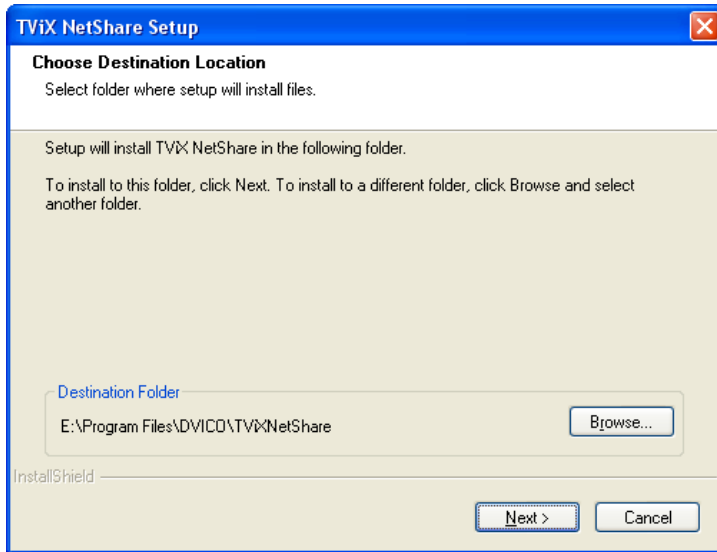
Most likely there will be an updated version of the files on our web site(www.tvix.co.kr/eng)

You should download the latest TViX Netshare installer in advance.

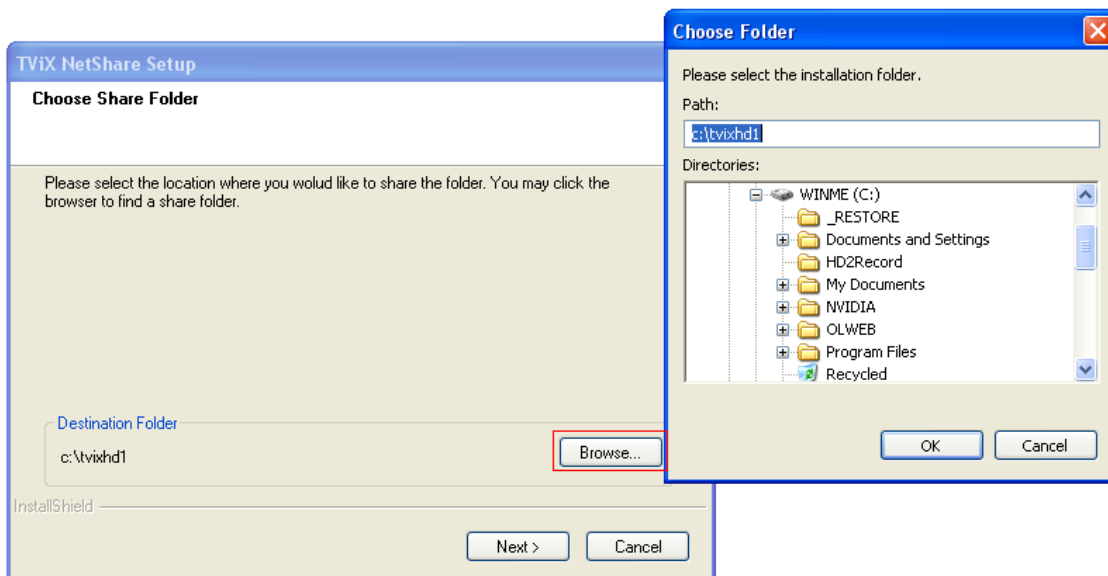


1 Run TViX Netshare installer and follow the on-screen prompts to install software.

2 The “Choose Destination Location” window will appear. Click on “Next” if you want to install the Net Share in the default directory. Otherwise, you can choose a different directory by clicking on “Browse”.

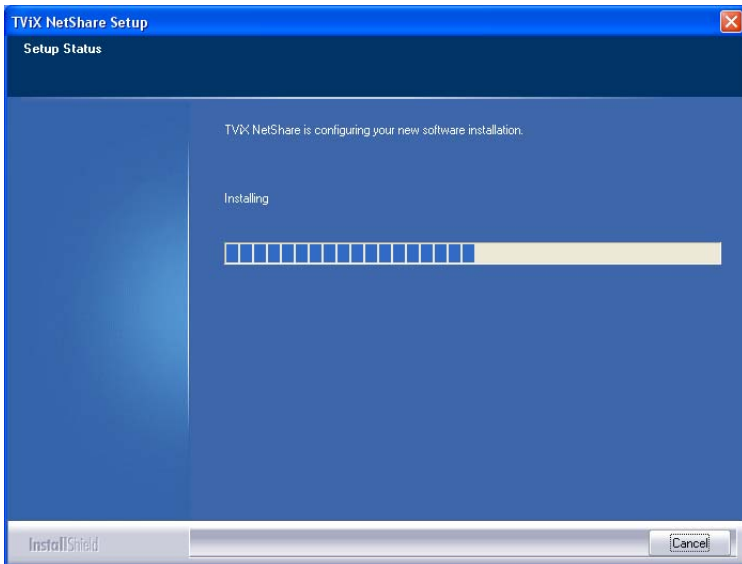


3 Please select the location where you would like to share the folder. You may click the browser to find a shared folder.

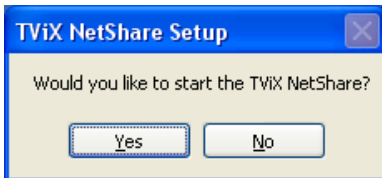


We recommend to share the NTFS file system.

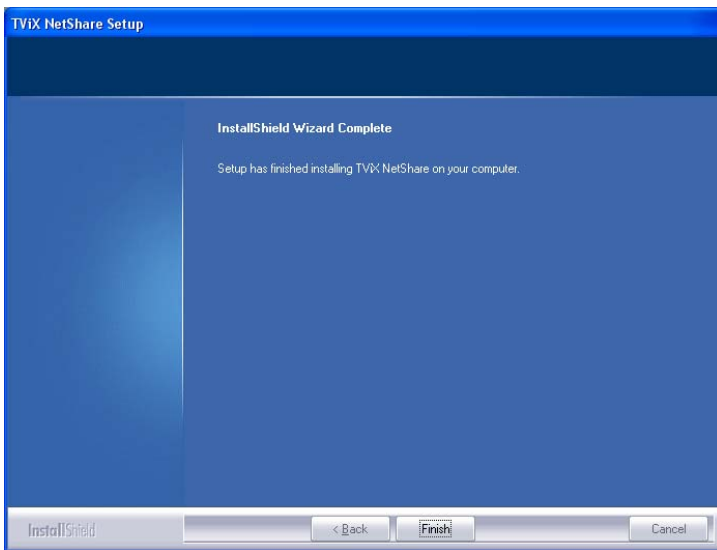
4 The “Setup status” window will appear.



5 Press YES button if you want to run the TViX Net Share automatically.



6 By clicking the Finish button, the software installation is done.



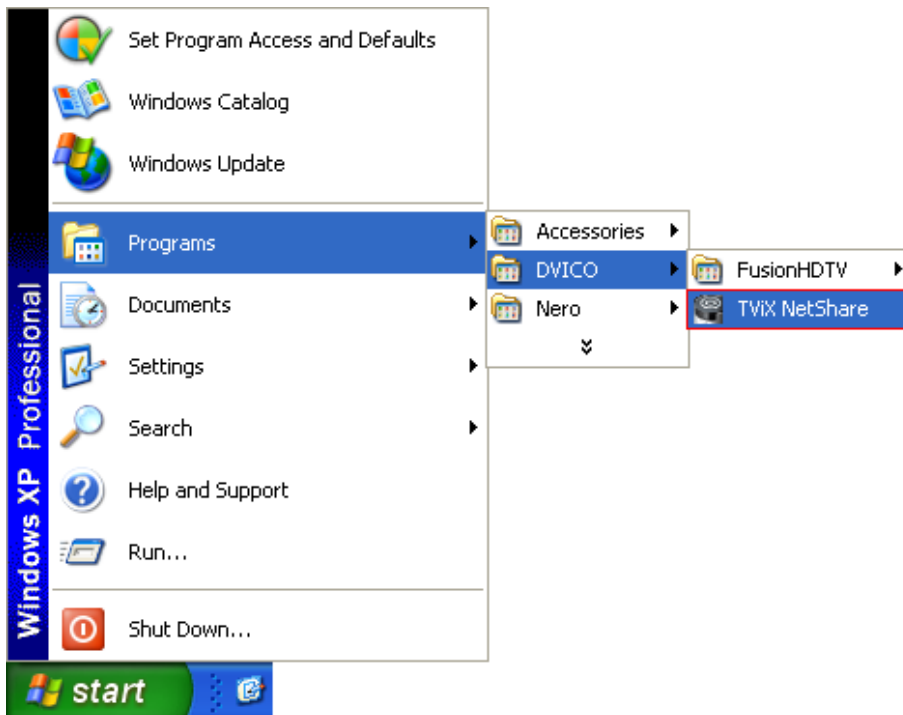
7 Press "Unblock" for the Windows Security Alert.



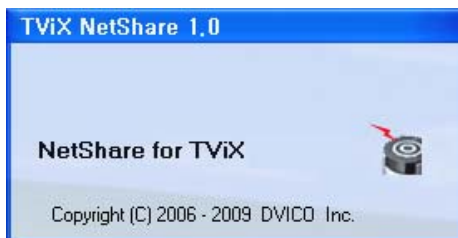
2. Using TViX NetShare

1 Click Start, point to Program->DVICO->TViX NetShare.

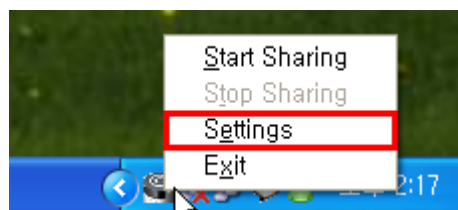
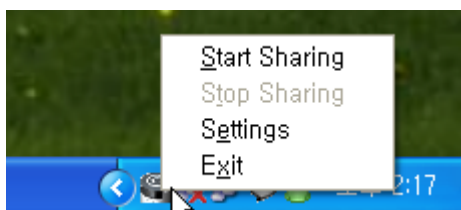
If TViX Netshare is working, You don't need to run this program again.



2 After starting the Net Share program, you can see Net Share icon on the tray..

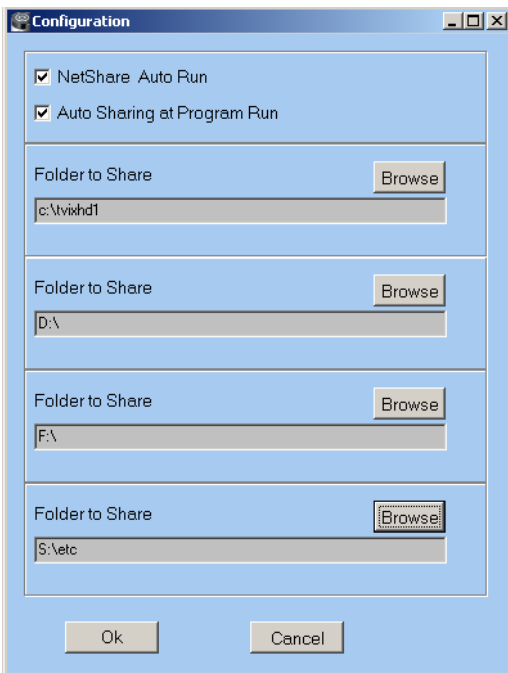


3 Start the setting by right clicking the Net Share icon at the low right bottom of the screen.



- Start Sharing : Used to start the sharing
- Stop Sharing : Used to stop the sharing
- Settings : Used to set the share folder
- Exit

4 After the Launch of Netshare software Application on the system. Right click on the ICON. Click on Setting.



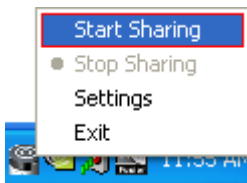
- NetShare AutoRun : used to autorun when the windows re-starts.
- Auto Sharing at Program Run : used to run with sharing at the same time.
- Folder to Share : use to change the shared folder.
In case of FAT32 file system, TViX doesn't load the file after changing the file name.

CAUTION

If you press the stop sharing when the network is connecting, you can see following message.



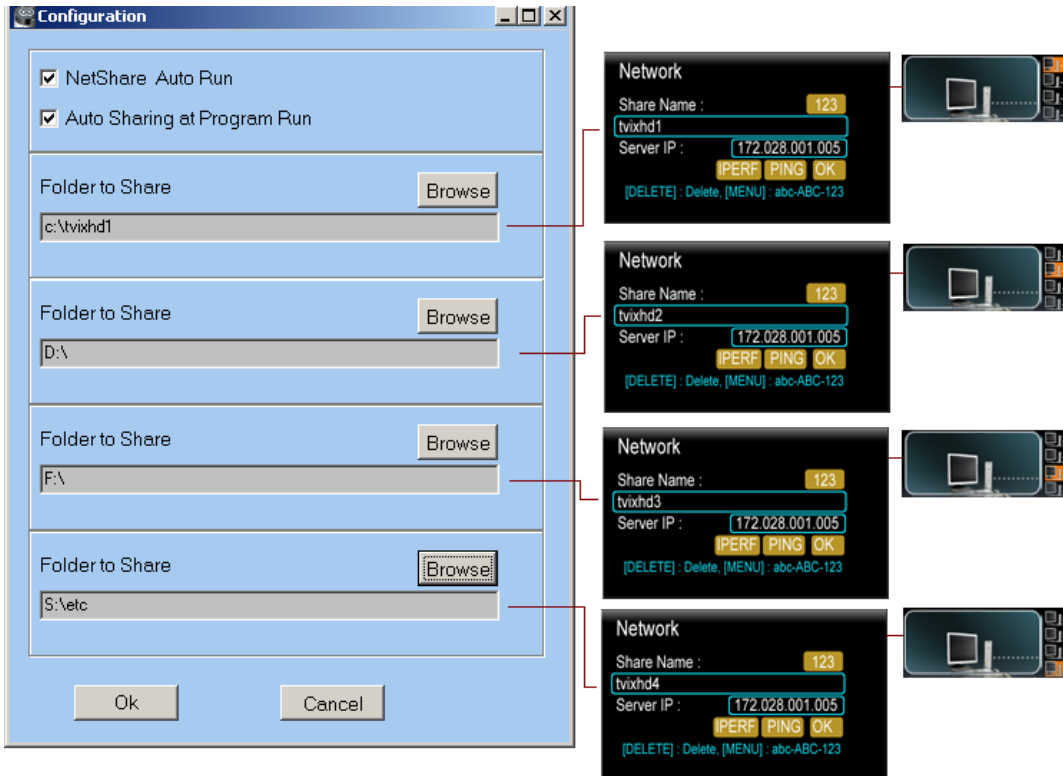
You must press the start the sharing on the tray again.



3. Use of Multiple Folder Option

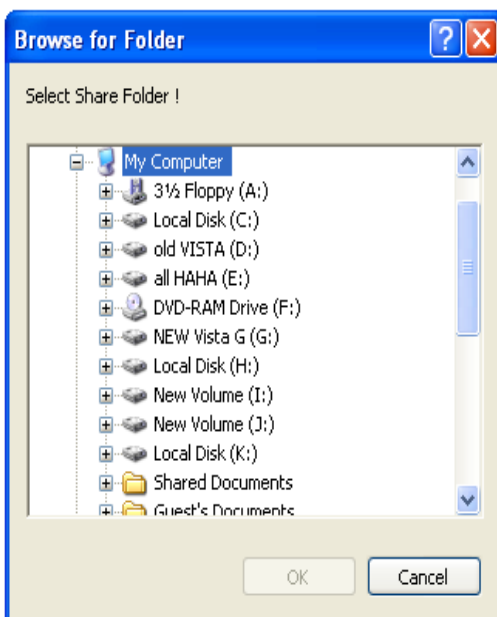
ACTION ON SYSTEM DISPLAY

1 After the Launch of Netshare software Application on the system. Right click on the ICON. Click on Setting.



2 Click on Browse, Corresponding to Folder 1 to Share. A window POPs UP as shown.

3 Select the Appropriate folder, Containing Media Files from desired Drive and Click OK.



4 Again Click on Browse, Corresponding to Folder 2~ Folder4 to Share.

5 Select the Appropriate folder, Containing Media Files from the desired drive and Click OK.

4. Setting Network Configurations in TViX

ACTION ON SCREEN DISPLAY

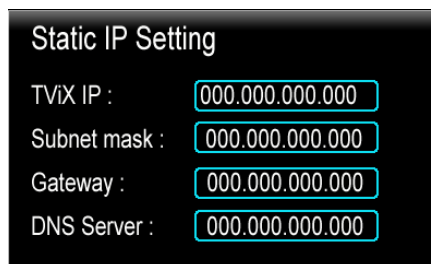
There is no difference between SAMBA mode and NFS mode.

1 Press [SETUP] on the remote control to view the setup screen. On that screen, select NETWORK setting.

The default is DHCP and if you want to set Static IP, you can select Static IP on the IP setting. Click OK on Static IP.

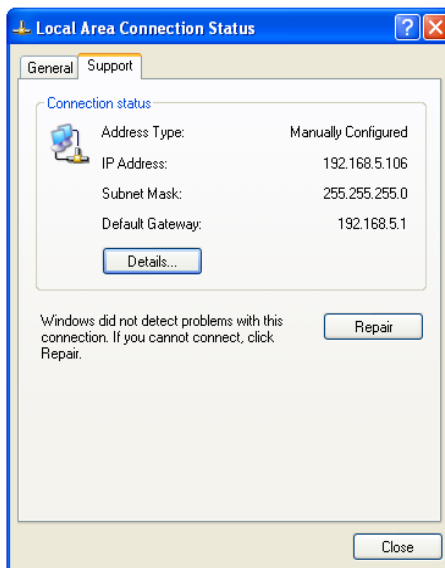
If you used the DHCP you don't need to assign the IP address because it's assigned automatically.

If you cannot access via LAN with DHCP setting, we recommend using the Static IP setting.

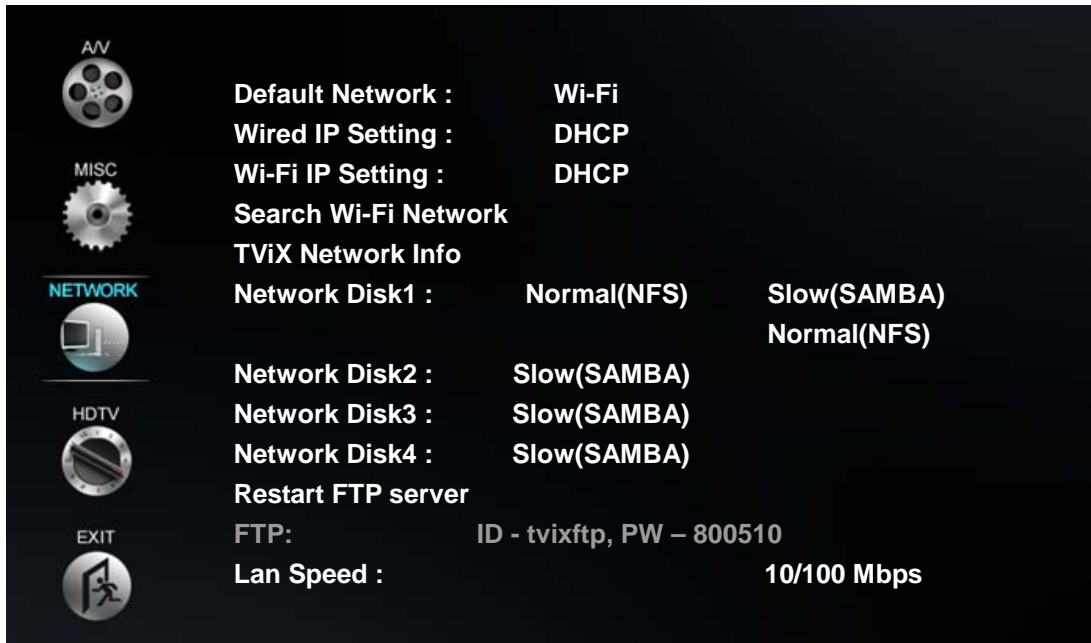


Select 'Control Panel > 'Network Connections', and select 'Status' properties by right clicking the mouse. After clicking the Support tab, press details, and you can see the Network connection details.

Write IP address, Subnet Mask, default gateway and DNS server. You must write different Host address like below Figure for TViX IP and Server IP. (Ex: 192.168.001.106 and 192.168.001.104). Write DNS Server address Similar to Gateway address.



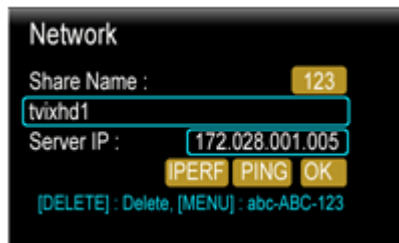
2 **Network Disk** : On the SET UP Feature .TViX Network Info Will be displayed.



On Network Disk 1. Select Normal (NFS). A Window POPS UP as shown below figure.

Type the appropriate Share Name as “tvixhd1”.

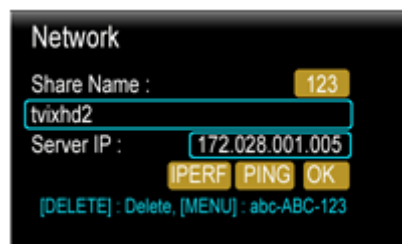
Type the Appropriate Server IP Address corresponding to IP address of the Host system. Click OK.



On Network Disk 2. Select Normal (NFS) . A Window POPS UP as shown below figure.

Type the appropriate Share Name as “tvixhd2”.

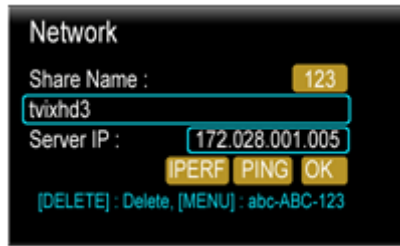
Type the Appropriate Server IP Address corresponding to IP address of the Host system. Click OK.



On Network Disk 3. Select Normal (NFS) . A Window POPS UP as shown below figure

Type the appropriate Share Name as “tvixhd3”.

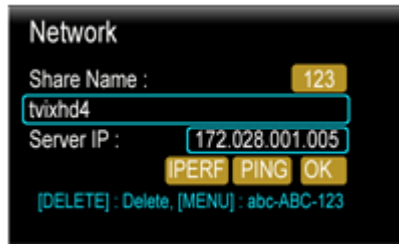
Type the Appropriate Server IP Address corresponding to IP address of the Host system. Click OK.



On Network Disk 4. Select Normal (NFS) .A Window POPS UP as shown below figure

Type the appropriate Share Name as “tvixhd4”.

Type the Appropriate Server IP Address corresponding to IP address of the Host system. Click OK.



3 Press Exit. Dialog BOX POP UP Save the Setting. By clicking on Yes

4 When the setting is successfully finished, you will be able to see the shared folder. Network Disk is supported up to 4 PC systems. You can see the partition on the network icon like below Figures.

5 Press the Repeat button(or numeric 7 key) if you want to change to network driver.

First Yellow Square Bracket is highlighted .Press ok .Will Display all the Folders and Content of Network disk

1



Second Yellow Square Bracket is highlighted. Press ok .Will Display all the Folders and Content of Network disk 2



Third Yellow Square Bracket is highlighted.Press ok .Will Display all the Folders and Content of Network disk 3



Fourth Yellow Square Bracket is highlighted. Press ok .Will Display all the Folders and Content of Network disk 4

